
A Register of Rowells

*A brief record of Male ROWELLS with years
of birth, death, and marriage with maiden
name of wife, of children, of places
lived and of principal activities.*



Published December 1956

Distributed privately at the expense of the author:—
MELVIN ROWELL, NORTHWOOD NARROWS, N. H.

A Register of Rowells

By

MELVIN ROWELL

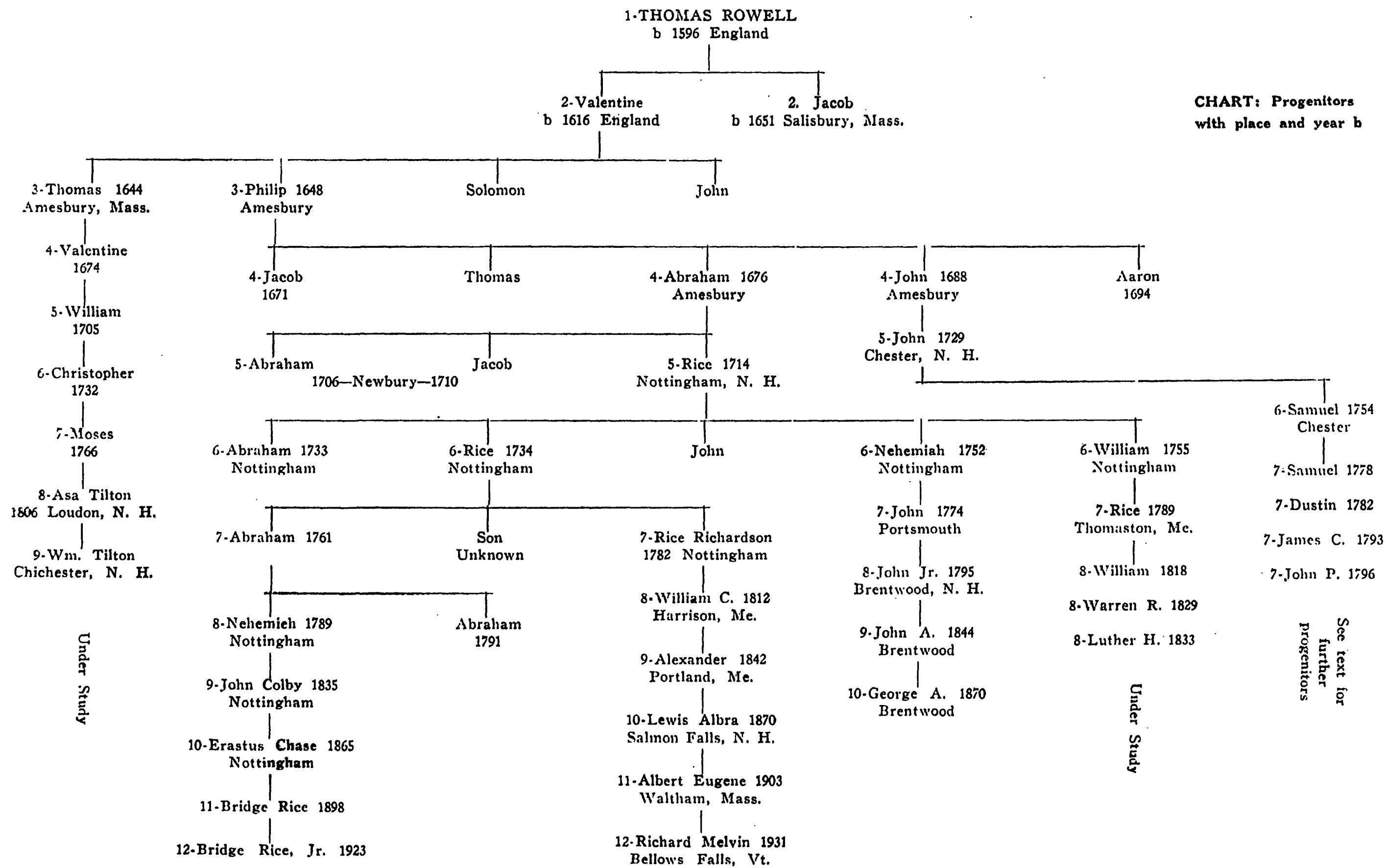


CHART: Progenitors
with place and year b

PREFACE

This Register is a brief record of some male Rowells—the years of birth, death, marriages and of their children, listed in order of birth. Biographical data, as a rule, is limited to places lived and occupation and principal activities.

The Register includes two separate Rowell families, viz. 1st that of Thomas Rowell of Mass. Bay Colony and the Province of New Hampshire and 2d that of Enos Rowell of extreme Northern N. H. and the adjacent areas of Vt. and Quebec Province. No record has been found of any other Colonial Rowells.

The author has carefully read and evaluated data as follows:—

- (a) E. C. Cogswell's "Northwood Centennial" published 1878 including "History of Nottingham, N. H.", incorporated 1722; of Deerfield, set off from Nottingham as a parish 1750 and incorporated 1766; and of Northwood first settled as a parish of Nottingham 1763 and incorporated 1773.
- (b) Pages 646-651 Vol II "Genealogy and Family History of the State of New Hampshire" by Ezra S. Stearns, published 1908.
- (c) "Samuel Rowell and Descendants" by Roland Rowell 1898.
- (d) Letters 6/11/27 and 2/13/29 by George P. Rowell, Atty of Stamford, Conn. who had completed a diligent search of Probate Court and other records of early Colonial Rowells.
- (e) Extracts from Eaton's "History of Thomaston, Me." regarding William Rowell b Nottingham 1755, a Revolutionary War soldier who served at Bunker Hill and in subsequent campaigns.
- (f) Certain family records.

ABBREVIATIONS

Numbers (1, 2, etc.) preceding or following names indicate generation. abt, about; b, born; d, died; m, married; ch, children; res, resided; occ, occupation and principal activities. Years when a parentheses (1770) are approximate. When the name of a child is bold face type (**John**) it means "see forward."

NOTE: 1—To facilitate living ROWELLS in tracing their descent, the Thomas Rowell family is presented in Sections A, B, C, etc. with appropriate cross references.

2—See personal message in the Appendix.

SECTION A

Thomas Rowell and Descendants. Three Generations.

- 1—THOMAS ROWELL b/abt 1596 England, d 1662 Andover, Mass. Came to Massachusetts Bay Colony from England with his son VALENTINE prior to 1638, probably early in the great migration of 1630-1642 when 16000 settlers arrived. His first wife remained in England and died prior to 1650. In 1651 m Mrs. Margery (Fowler) Osgood, a remarkable woman of the period who died in 1701 and by whom he had a son **Jacob**. Thomas was a cooper a maker of pipe staves. In 1648 he was fined 10 shillings and 2 pence for not attending at public worship at the same time that John Bournd was fined for selling strong water from which it was inferred that Thomas was a bit convivial but later he was a deacon in the church at Andover. He was one of the first proprietors of Salisbury and was allotted land in 1638 upon the first division of lands in that town. In 1649 he moved to Salem. 1650 returned to Salisbury, 1652 moved to Ipswich, 1658 moved to Andover where he died May 8, 1662.
- 2—VALENTINE (Son of Thomas 1) b (1616) England, d May 17, 1662. m 1643 Johanna Pender who came to the Colony when 14 years old, with her mother in 1635. occ—carpenter. With his father, Thomas 1, was one of the original proprietors of that part of Salisbury later incorporated as Amesbury, Mass.
ch—**Thomas, Philip**, Mary, Solomon, Hannah, John, Elizabeth, Margaret. No further record of Solomon John died young.
- 3—THOMAS (son of Valentine 2) b 1644, d 1684, m Sarah Barnes.
ch—**Valentine** (See Sec. B)
- 3—PHILIP (Son of Valentine 2) b 1648, d 1690 killed by Indians, m 1670 Sarah Morrill. occ—shipwright, inn keeper, mail carrier Newburyport-Portsmouth. res Amesbury, Mass.
ch—**Jacob** (See Sec. C), Sarah. Thomas, **Abraham** (See Sec. C) **John** (See Sec. D), Job, Hepzibah, Judith, Aaron. No further record of Thomas, Job, Aaron.

SECTION B

Descendants of Thomas Rowell

- 4—Valentine, (Son of Thomas 3 of Sec. A) b 1674, d 1726 m Hannah Sargent.
- 5—William (Son of Valentine 4) b 1705, m Elizabeth Challis.
- 6—CHRISTOPHER (Son of William 5) b 1732, m Ruth Morse.
- 7—MOSES (Son of Christopher 6) b 1766, res Loudon, m 1st Ellice Currier who d 1796; 2d Nancy Leavitt who b 1777, d 1867.
ch—John, Moses, Nancy, Micajah, Ruth, **Asa T.**, Harris, Cyrus, Rufus, Sally who m Theophilus Blake Martin of Loudon.
- 8—ASA T. (Son of Moses 7 and Nancy Leavitt) b 1806 Loudon, d 1875, m Abigail Sanborn Moulton who d 1864, res Chichester, occ—farmer.
ch—William H., d young; Edward P., Annie B., **William T.**, Mary J., John A., Annie B., m Daniel Yeaton of Epsom, N. H. John A. was a clergyman and res Minnesota.
- 9—William TILTON (Son of Asa T. 8) b 1843 Chichester, d 1897 m 1866 Lizzie M. Stone. William T. was a graduate of Epsom High School, in 1864 went to Manchester, N. H., occ—worked Amoskeag Mills 1 year, then in Manchester Mills where he became overseer. Was prominent in social and church affairs.
ch—**Arthur W.**, Myra Lillian.
- 10—ARTHUR WILLIAM (Son of William T. 9) b 1870 Manchester, m 1897 Alice O. Spaulding, res Manchester. Prominent in church, social and business affairs in Manchester.
ch—Bertha Eunice, Mildred Louisa, Lucien Adrian.

SECTION C

Descendants of Thomas Rowell 1

The Rowells of Nottingham, N. H.

- 4—ABRAHAM (Son of Philip 3 of Sec. A) b (1676) Amesbury, Mass.; d (1745) Nottingham, N. H., m 1701 Mary Wardwell, res Newbury, Mass. and moved to Nottingham abt 1712.

Nottingham records (Cogswell) show that Abraham 4 with 100 other settlers in 1721 petitioned the Provincial Governor to settle a compact town and on May 10, 1722 a Royal Charter was issued to 118 Proprietors including Abraham; also that upon the second division of lands, Nov. 4, 1730, Abraham was allotted lot 43 on Winter St., and upon the 3d division of lands made Oct. 17, 1733 he was granted two lots of 100 acres each viz Lots 6 and 9 Range 1, running southerly, from Street No. 1 of the Survey of 1732-33, to the Chester (now Epping) line, which places them just south of Pawtuckaway Mtn.

Ch—Abraham b 1706, Jacob b 1710, Rice b 1714 and 3 girls; all born in Newbury except Rice b Nottingham. No further record of Abraham^s and Jacob^s.

4—JACOB (Son of Philip 3 of Sec. A and brother of Abraham 4) b (1671) Salisbury now Amesbury, Mass. No further record of him except as follows: Nottingham records (Cogswell) show that, on Nov. 4, 1730, he was allotted Angle Lot No. 2 and that on Feb. 1, 1733, upon the 3d Division of lands, he was granted Lots 2 and 20 Range 4 of the Survey of 1732-33. Lot 2 was bounded on the East by the present Deerfield line and ran southerly from Wheeler hill to the Stevens road. Lot 20 was in the Mt. Delight district of Deerfield.

5—RICE (Son of Abraham 4) b 1714 Nottingham, d 1754 Nottingham, m Sarah ———, res Nottingham.

Ch—1 Abraham, 2 Rice, 3 John, 4 Mary, 5 Judith, 6 Sarah bap 1748 Kingston, N. H.; 7 Nehemiah (See Sec. E), 8 Elizabeth; and 9 William (See Sec F) who was b within 8 mos. after his father's death in 1754 and was provided for in his father's will. No further record of Abraham^s and John^s.

6—RICE (Son of Rice 5) b 1734 Nottingham, d (1809) Nottingham. m (1760) Elizabeth Harvey. occ—a prosperous farmer and family patriarch.

In 1776 he with others signed the Association (Loyalty) Test for the N. H. Public Safety Committee. In Oct. 1782 he was a Grand Jury man. The 1806 Inventory of Nottingham listed him as owner of 8 acres of mowing and unimproved land and buildings valued at \$300 with tax of \$8.75 which was well above the average of the 195 settlers listed. It is noted that the Nottingham census of 1775 showed 485 males (including 22 soldiers), 552 females and 16 negroes and slaves. In 1808 he deeded to his grandsons Nehemiah 8 and Abraham 8 fifty acres of land, being the land occupied by the widow Betsy Rowell (Wd of Nehemiah 6).

Ch—3 sons and 7 girls, 1 Abraham, b (1761); 2 a son name unknown, 3 Sarah b 7 Apr 1765, m Trueworthy Dudley at Pembroke, N. H. 1 May 1791; 4 Betsy m 1798 Moses Moody Watson; 5 Jane m 1793 Nathaniel Marston (or Martin); 6 Love m 1797 Joseph Gilman of Pembroke; 7 Nancy m 1803 William Page of Deerfield; 8 Fanny m 1st 1795 Daniel Martin, 2d a Teeg of Maine; 9 Grace m 1st 1802 Daniel Ladd of Lee, 2d a Norcross of Maine; 10 Rice Richardson b (1782) (See Sec G)

7—Abraham (Son of Rice 6) b 1761 Nottingham. res Nottingham, m BETSEY ———.

Ch—Nehemiah and Abraham.
No further record.

8—NEHEMIAH (Son of Abraham 7) b 1789 Nottingham, d 1872 Nottingham, age 82 yrs. m Elizabeth Brown who b 1792 d 1858 Nottingham. res Nottingham.

A half interest in the land deeded in 1808 to him and his brother Abraham 8 was, in 1816, deeded by them to Bradbury Bartlett who in 1818 deeded the said half interest to Elizabeth Rowell the widow of Nehemiah 8. Thus in 1818 Nehemiah 8 became vested in the whole interest in the land in question which in 1826 he sold to Josiah Winslow of Pittsfield.

Ch—John Colby. No further record.

- 8—ABRAHAM (Son of Abraham 7 and brother of Nehemiah 8).
b 1791 Nottingham, res Nottingham-Deerfield.

No doubt he was the Abram Rowell reported as serving 60 days in the War of 1812 from Deerfield.

Note remarks above under Nehemiah 8.

No further record.

- 9—JOHN COLBY (Son of Nehemiah 8) b 1835 Nottingham, d 1919.
m 1864 Mary Eliza Clarke of Barrington, N. H. occ. farmer.

Ch—Erastus Chase b 1865; George Harvey 1867, Wilbur James 1873.

- 10—ERASTUS CHASE (Son of John Colby 9) b 1865 Nottingham, d 1945, m Agnes May Sargent who b 1872 d 1909.

res Raymond, Kingston. occ. milk dealer

Ch—Bridge Rice b 1898; Mary Sargent b 1905 who m Beverly S. Chamberlin of E. Kingston.

- 10—GEORGE HARVEY (Son of John Colby 9) b 1867 m Belle Tuttle Hanscom of Nottingham.

No ch

- 10—WILBUR JAMES (Son of John Colby 9) b 1873 d 1945.

m 1905 1st Laura C. Clegg of Andover; 2d 1945 Isabelle Dean of Waltham and Lawrence, Mass. occ—Supervisor Davis and Fowler Machine Co.

- 11—BRIDGE RICE (Son of Erastus Chase 10) b 1898, d 1952.

m 1st 1921 Jennie Isabelle Platts of Haverhill, Mass. who died; 2d Olive Margaret Platts, res Dover, N. H. occ—Dealer Tide-water Oil Co.

Ch—Bridge Rice Jr. b 1923; Roslyn b 1931 who m Norman A. Levesque.

- 12—BRIDGE RICE Jr. (Son of Bridge Rice 11) b 1923 m 1944 Mary Louise Reedy.

occ U. S. Navy Submarine service, enlisted 1941.

Last address San Diego, Calif.

Ch—Bridge Rice 3d b 1945; Stephen Wayne b 1949.

SECTION D

Descendants of Thomas Rowell 1

The Rowells of Chester and Weare, N. H.

- 4—JOHN (Son of Philip 3 of Sec. A) b 1683 Amesbury, Mass., d Feb. 1, 1736 Kingston, N. H. m 1715 Elizabeth Colby.
In 1729 moved to Chester and settled June 4th on the north part of Lot 114.

ch—the first three were born in Amesbury, the rest in Chester;—Enoch, Judith, Benoni; John, and 2 girls one of whom m a John Sanders.

No further record of Enoch.

- 5—JOHN (Son of John 4) b (1729) Chester, d 1760, m (1749) Elizabeth ———, res Chester near Londonderry line. Soldier French and Indian Wars—enlisted March 10, 1760 for Col. Haviland's expedition against Canada in Capt. John Hayes Company of Col. John Goffe's Regt. which cleared the road to Charlestown, N. H., opposite which point on the Connecticut River a block house was constructed and here John fell ill and died Oct. 12, 1760.

ch—all born at Chester, Moses, Benjamin, Patience, Samuel b 1754, and 2 girls, one of whom m a Bowles, the other a Newell, both of Wentworth, N. H.

No further record of Moses and Benjamin.

- 6—SAMUEL (Son of John 5) b 1754 Chester, N. H. d 1830 m 1777 Sarah Dustin. He was a Revolutionary War soldier and served at Bunker Hill and in subsequent campaigns. After his discharge in 1781 he lived at Weare, N. H. and later at Chester, now Hooksett.

ch—Samuel, Betsy, Dustin, Lydia, Sarah, Mary, James C., John P.

(Note: Descendants of Samuel 6 are referred to "Samuel Rowell and Descendants" by Roland Rowell, published and entered Library of Congress in 1898. This excellent book presents much biographical data concerning about 56 male Rowells and about 420 distaff. No doubt a copy of this book is in possession of many of the descendants of Samuel 6 listed below.)

- 7—SAMUEL (Son of Samuel 6) 1778-1871, b Weare, N. H. m Mary Atwood and settled in Chester. About 1817 moved to Vermont and res Waterford, Lyndon, Kirby and Concord. occ—farmer, fox hunter.

ch—Rodney, Samuel, William, James C., John P., George W., Betsy, Frederick, Mary A.

- 7—DUSTIN (Son of Samuel 6) 1782-1866 b Weare m 1808 Jane Gordon res N. H., Chester, Allenstown, Dunbarton, Bow; Vt. Kirby, Lyndon. occ farmer.
ch—Mary, Nancy, Elsie L., Clarissa W., Elizabeth, Charles H. Elvira W.
- 7—JAMES COLWELL (Son of Samuel 6) 1793-1857, b Weare, m 1st Olive A. Wiggin, 2d Mrs. Mary Smith—res 1826 Amoskeag village, 1835 moved to Auburn, 1847 to Londonderry. Soldier of War of 1812.
ch—George W., Sarah E., Charles W., Mary L, Olive A.
- 7—JOHN PAGE (Son of Samuel 6) 1796-1875, b Chester, N. H. m 1820 Betsy Emerson. res Chester (now Hooksett), 1828 moved to Amoskeag village, 1842 to Manchester (North River Rd.) occ farmer, soldier War of 1812 and later Captain of Militia, Chester Company. In 1870 visited sons and daughters of his brothers and sisters in northern N. H. and Vt.
ch—John L, Ephriam K., Elizabeth E., Frank D.
- 8—SAMUEL (Son of Samuel 7) 1808-1883 b Chester. m 1834 Caroline Page. res, in Vt., Concord, 1841 Bradleys Vale; in N. H., abt 1845 Manchester, 1851 Lancaster; 1862 moved to S. Natick, Mass., and later to Medford, Mass. occ farmer and cotton mill employee.
ch—Harriet M., Bernice A., George Presbury, Persis A.
- 8—WILLIAM (Son of Samuel 7) 1811-1891, b Chester. m 1840 Abigail Chaffee, occ farmer, res Concord, Vt. and Lancaster, N. H.
ch—Emily, Celia B.
- 8—JAMES COLWELL (Son of Samuel 7) b 1813 Chester. m 1842 Ann Poor. res Lowell, Mass. and Concord, Manchester, N. H. occ farmer.
ch—Elizabeth A., James H., Caroline L.
- 8—JOHN PAGE (Son of Samuel 7) b 1816 Waterford, Vt. m 1850 Ruth M. Barnes of Groveland and Portage, N. Y. In 1837 walked to Ohio with 3 brothers who remained there.
ch—Hiram V., Mary E.
- 8—GEORGE WASHINGTON (Son of Samuel 7) 1819-1898. b Lyndon, Vt. m 1844 Marcia A. Chadburn. In youth spent 6 yrs on whaling cruise. Civil War soldier 1861-65. res New York, Wisconsin, moved 1873 to Kinsley, Kansas, then to Whitefield, N. H. and then to Great Bend, Kans.
ch—Charles H., Edward A., Mary E.
- 8—FREDERICK (Son of Samuel 7) b 1823 Kirby, Vt., m 1846 Rosaline A. Banfill. res Manchester 1846, moved 1848 to Concord, Vt., 1857 to Boston, 1859 to Medford, Mass., 1863 to Natick,

- 1865 to Littleton, N. H., and 1871 to Whitefield, N. H. occ farmer, storekeeper.
ch—Charles E., Clara L., Edward E., Marietta A., Alice M., Bertha E.
- 8—CHARLES HARVEY (Son of Dustin 7) 1820-1872, b Lyndon, Vt. m 1847 Ann Hemingway. Graduate Dartmouth 1845. res Maine:—Acton, Springvale, Lebanon, Fairfield. occ Doctor.
ch—Charles, Alonzo, Julia
- 8—CHARLES WESLEY (Son of James C. 7) 1820-1894, b Chester, m 1847 Sarah B. Hammond. In 1849 went to California, returned to Manchester 1951. occ farmer.
ch.—Charles W., Herbert S., Clara L., Grace L., James, F. Henry I.
- 8—JOHN LORD (Son of John P. 7) 1821-1853, b. Chester, m 1847 Betsy Sargent. res 1847 Hooksett, 1850 moved to Manchester. occ Grocery, cotton mill employee.
ch—Ella F.
- 8—EPHRIAM KELLY (Son of John P. 7) 1822-1896, b Hooksett, m 1847 Mary A. Davis. res Manchester, moved 1876 to northern part of city. occ business man.
ch—Roland, Charles E.
- 9—GEORGE PRESBURY (Son of Samuel 8) b 1838 Concord, Vt. m 1st 1862 Sarah B. Eastman; 2d 1891 Jeanette Rigney Halleck. res Boston, New York City, occ In 1869 published first complete Directory of U.S. newspapers and in 1880 published a Journal "Printers Ink", both of which were a guide to advertisers.
ch—Persis E.
- 9—HIRAM VANDALIA (Son of John P. 8) b 1851 Groveland, N. Y. m 1875 Mary A. Greenwood. res Nunda, N. Y. occ Hotel keeper.
ch—Georgia A. b 1876.
- 9—CHARLES HENRY (Son of George W. 8) b 1846 Boston, d 1864. res Lancaster, N. H. Enlisted 1864 4th N. Y. Heavy Artillery, killed in action Petersburg, Va. 1864.
- 9—EDWARD ALONZO (Son of George W. 8) 1848-1896, b Boston. m 1870 Janett H. Cross. Went to near Kinsley, Kans. and in 1873 moved to Great Bend.
ch—Elizabeth.
- 9—CHARLES EMERY (Son of Frederick 8) b 1849 Concord, Vt. m 1872 Arletta E. Bolles. res. Stamford, Conn. occ prominent Doctor, very active in civil affairs.
ch—James F., George Press, Edward E.

- 9—EDWARD EVERETT (Son of Frederick 8) b 1853 Concord. Vt. m 1st 1876 Ella Willard; 2d 1892 Adeline Skelding. res N. Y. City, Chicago, Colorado. In 1877 moved to Stamford, Conn. occ Doctor, prominent in many civil affairs.
ch—Edward E., Rodney, Wallis, Doris.
- 9—CHARLES (Son of Charles H. 8) b 1849, Lebanon, Me. m 1890 Frances S. Allen. res Fairfield, Me. and Union, N. H. occ Lawyer.
ch—Katherine Frances
- 9—ALONZO (Son of Charles H. 8) b 1854 Oakland, Me. 1898 not married. res Loyalton, Calif. occ—farming, mining, stock raising.
- 9—CHARLES WILLIAM (Son of Charles W. 8) b 1852 Manchester, N. H. m 1st 1876 Mary E. Stark; 2d 1895 Addie Pingree. occ farmer. ch—Dudley S., John P. S.
- 9—HERBERT SIDNEY (Son of Charles W. 8) b 1854 Manchester, m 1896 Bessie Green. res Manchester 1898
- 9—JAMES FRANCIS (Son of Charles W. 8) b 1868 Manchester. res Manchester 1898. not m
- 9—HENRY IRVING (Son of Charles W. 8) b 1870 Manchester. m 1891 Maggie B. Marden. res Manchester 1898. occ House Painter, paper hanger, Lieut. of Militia.
- 9—ROLAND (Son of Ephriam K. 8) b 1849 Manchester. m 1885 Susan A. Crosby. res Boston, Lowell, Manchester. occ Lawyer, court clerk, author of "Samuel Rowell and Descendants" published and entered Library of Congress 1898. No ch.
- 9—CHARLES EDGAR (Son of Ephriam K. 8) b 1851 Manchester. Not m 1898. res Manchester. occ Realtor.
- 10—JAMES FREDERICK (Son of Charles Emery 9) b 1874 Dalton, N. H. Not m 1898. res Stamford, Conn., occ expert on Indian affairs.
- 10—GEORGE PRESS (Son of Charles Emery 9) 1876-1935, b Lancaster, N. H. m 1919 Ruth L. Tucker of New Canaan, Conn; res Stamford, Conn. occ Graduate Yale 1897. Lawyer at 21. youngest ever admitted to Conn. bar. Also admitted to N. Y. bar and to U. S. Supreme Court bar. During WW 1 worked in Dept. of Alien Property Custodians. His death at 59 interrupted his work on a "Rowell Genealogy". The present author has been greatly helped by his letters on "The Rowells of Nottingham, N. H." dated in 1927 and 1929. No ch.
- 10—EDWARD EVERETT (Son of Charles Emery 9) b 1878 Lancaster, N. H. d 1947, m 1921 Madeline Geronimo of Stamford. res Stamford, occ physician, Graduate Phila. Homeopathic College, an early Roentgenologist. No ch.
- 10—RODNEY WALLACE (Son of Edward Everett 9) b 1893 Stamford, res Stamford occ Doctor—no further record.

10—EDWARD EVERETT (Son of Everett E. 9) b 1876 Stamford, res Stamford. In 1898 reported Student of medicine and of Harvard College—no further record.

10—DUDLEY SAVORY (Son of Charles W 9) b 1877 Lynn, Mass., m 1897 Flora B. Cate, res 1898 Manchester—no further record.

SECTION E

Descendants of Thomas Rowell 1

The Rowells of Brentwood, N. H.

6—NEHEMIAH (Son of Rice 5 and brother of Rice 6 of Sec C) b (1752) Nottingham, d 1779 Portsmouth leaving a widow Elizabeth and 3 ch—John bap 1774; Elizabeth, bap 1776; and Sally, bap 1778.

This Elizabeth Rowell, Wd of Nehemiah 6, was taxed on the Nottingham Inventory of 1806 and in 1808 a deed by Rice 6 (of Sec C) transferring certain lands to his grandsons shows that she was then living on the said lands.

7—JOHN (Son of Nehemiah 6) bap. 1774, d 1844, m Mehitable ———, res Brentwood, ch—John Jr; Charles Lewis.

8—JOHN, JR. (Son of John 7) 1795-1852 b, res, d Brentwood m———, ch—John A.

9—JOHN A. (Son of John Jr. 8) 1844-1938, m 1866 Mary Carter res Brentwood
ch—Walter, Alice m Steeves, George A.

10—GEORGE A. (Son of John A. 9) b 1870 Brentwood. res Brentwood. Lives on a 25-acre farm purchased abt 1840 by his maternal grandfather. res 1888 Sandown, 1891 Brentwood, 1905 Exeter, 1911 Puerto Rico, 1917 returned to Brentwood where he still lives 1956.

8—CHARLES LEWIS (Son of John 7) Tanner Newbury Port. m Mary Ann Sanborn. ch—Charles Everett

9—CHARLES EVERETT (Son of Charles Lewis 8) 1836-1919. m Judith M. Gile, occ grocer at Merrimac Port
ch—Laura b 1866 m Everett Jewell

SECTION F

Descendants of Thomas Rowell 1

The Rowells of Thomaston, Me.

6—WILLIAM (Son of Rice 5 of Sec C) 1755-1811, b Nottingham, N. H. m (1784) Mrs. Ruth Matthews. He was a Revolutionary War soldier who served in Capt. Henry Dearborn's Company at Bunker Hill, and in subsequent campaigns. Shortly after the war he moved from Northwood and Nottingham to Thomaston, Me.

ch—Betsy, m Russ; William, d at 3 yrs.; Rice, b 1789; John, d young; Ruth, m Butler; Mary b 1794, m Dunning.

7—RICE (Son of William 6) 1789-1863 b Thomaston, m 1st 1816 Sally Dunning; 2d 1839 Mrs. Eunice (Davis) Allen; 3d 1856 Sally (Holmes) Ally.

ch—Eliza D. m 1816 Crocket; William 1818; Robert O. 1821-1831; Ruth 1824, m Heard; Margaret 1827-1841; Warren R. 1829; Luther H. 1833; Hannah H. 1836; Mary 1839.

8—WILLIAM (Son of Rice 7) b 1818, m Mary Ellen Bartlett. Moved to Ohio.

ch—Adelphus b 1843; Almenezer 1846; Frank B. 1847; Rice 1852 d infancy; Henry S. 1853 d infancy; Mary E. 1856.

8—WARREN R. (Son of Rice 7) b 1829, m 1852 Hannah Ann Fales.

ch—Warren R. Jr. b (1856); Nathan C. (1857).

8—LUTHER H. (Son of Rice 7) b 1833, m 1856 Sarah Matthews of Lincoln.

ch—Frederic B. b 1857; Ida 1859.

SECTION G

Descendants of Thomas Rowell 1

The Rowells of Maine etc.

7—RICE RICHARDSON (Son of Rice 6 of Sec. C) (1780-1840) b Nottingham, N. H., m Sarah Spinney. Moved to Harrison, Me. before 1810 (when that town was founded). Occ small store-keeper and surveyor of roads. Lived in a small brick house (still standing in 1905) located on the Ridge east of Long Lake and abt 5 m. south of the town at the north end of the lake.

Ch—William C. b (1812)

8—WILLIAM C (Son of Rice Richardson 7) (1812-1874) b Harrison, Me., res Portland and Alfred, Me., m 1st 1833, Mary Nash of Portland; m 2d 1841, Sarah Plumer of Portland. occ bootmaker and violinist who played at social gatherings.

Ch—All born Portland, by 1st m 3 girls who all d in youth, by 2d m **Alexander** b 1842, Sarah 1844 who m a Johnson and moved to Manhattan, Kansas, William b 1846, d 1887.

- 9—**ALEXANDER** (Son of William C. 8) 1842-1905, b Portland, m 1867 Susan Ellen Junkins of York, Me., a descendant of the McIntires and Junkinses of York who came from Scotland to York abt 1670. Alexander served in 27th Maine Vol Inf in the Civil War and his brother William in the 31st Maine Vol Inf. occ country produce with a hobby of driving a trotting horse. res South Berwick, Me., Salmon Falls, N. H., Waltham (40 Vernon St.) Mass.

Ch—1 Melvin Weston b 1868 S. Berwick, his ch—Melvin Wilson d 1952; Josephine m Haulman (no ch); Huguette m John P. Tasker (ch—Ronald, Robert, Gary); Suzanne m Eugene M. Lester (ch—Terry, Karl, Steve).

2. **Lewis Albra**, see forward; 3 Wesley Alexander b Waltham 1873 d 1934, his ch—Alice m Hokanson (1 ch, Susan);

4. Lena Susan b 1873 (twin) d 1952 unmarried.

- 10—**LEWIS ALBRA** (Son of Alexander 9) b 1870 Salmon Falls, N. H., d 1921 Rutland, Vt., m 1899 Emma A. Mandigo. occ Salesman Boston, Manager Gas Plant, Vineland, N. J. 1893, Operator of Diner, Rutland, Vt.

Ch—1 Lewis William b 1901, Waltham, Served in U. S. Army for 28 years, in WW 2 as Captain QM Corps in France and England, d on active service Camp Pickett, Va. buried Arlington Cemetery. 2 **Albert Eugene** b Waltham 1903, 3 Esther A. b 1908, m 1st a Schott (ch—Joan, Virginia), m 2d a Tallman of Philadelphia, Pa.

- 11—**ALBERT EUGENE** (Son of Lewis Albra 10) b 1903 Waltham, m 1924 Rita M. St Lawrence, res Bellows Falls, Vt. occ Foreman Truck maintenance shop.

Ch—1 Shirley Elaine, b 1926, m Gerald Delbeck of Burlington, Vt. 2. **Albert Eugene Jr.**, b 1928, 3 Richard Melvin b 1931, res Chicago, shortly after WW2 served in U. S. Army (Inf) Philippine theater, occ Expert Accountant, Graduate 1956 University of Maryland. All ch born Bellows Falls, Vt.

SECTION H

Descendants of Thomas Rowell 1

The Rowells of Weare, Croydon, Newport, N. H.

Note: Ezra S. Stearns on page 649 (Vol. II) of his books "Genealogical and Family History of the State of New Hampshire", published in 1908, carries the family presented below as a "second family" and states "There can be no doubt that the line traced below is a branch of the old Essex County family of Rowell. A very diligent

search has failed to discover the date and place of birth and parentage of the first one given below."

Essex County, Mass., is included in that area of Mass. Bay Colony and the Province of N. H., in which five generations of the descendants of Thomas Rowell lived from 1638 to 1775 and no other Rowells than said descendants are known to have lived in that area, during the above period.

We know that during the above period large families with plenty of male children were usual and we also know that to date no records have been found of the birth, marriage and children of many male Rowells of that period. For instance, from 1638 to 1775 we find no record of the marriage of 11 male Rowells of record and also that only one male descendant is recorded in each case of 4 male Rowells who married.

Therefore it is logical to conclude that David Rowell b 1761, the first of the line presented below, is a descendant of Thomas Rowell. Further David Rowell of Weare, N. H. was a contemporary, and once a neighbor, of Samuel Rowell b 1754 who was a descendant of Thomas of the 6th generation. Accordingly pending confirmation by further research David is listed below as G6 of the Thomas Rowell family; *though he may be son of Abraham*⁶.

G 6—DAVID ROWELL. 1761-1813, m 1794 Mary Brown, res. Weare and Croydon. Before 1802 moved to Croydon (a few miles north of Newport) where that year his wife was killed by lightning. He then returned to Weare and in 1804 m Dolly Lovering and soon after again moved to Croydon. Ch., by first marriage, Anna, Judith, Hilliard, Stephen; by second wife, David, Betsy, Sally.

G 7—HILLIARD, (Son of David 6) 1798-1864, b Weare, N. H. res Croydon, occ. farmer, m 1825 Philena Keniston, ch. Danforth, Hilliard, Albert, Eben, David (d young) Sylvester David Calef.

G 8—SYLVESTER, (Son of Hilliard 7) 1831-1896, b Croydon, m 1860 Sarah C. Dow, res Croydon, occ. farmer, stone mason, cattle dealer. Upon death held 600 acres of land with substantial buildings. Ch. Sarah J., John W., Hilliard E., David S.

G 9—JOHN WESLEY, (Son of Sylvester 8) 1864 ———, b Croydon, m 1885 E. Belle Colby, res Sunapee, occ. lumbering and building supplies, Selectman of Sunapee.

G 7—STEPHEN, (Son of David, G 6,) 1802-1877, b Croydon, m 1st Keron H. Bartlett. 2d Irene B. Bartlett. 3d Mary R. Woodbury, res Croydon, Weare, and Newport where he died. occ. teacher, farmer, wool growing. Ch. all born Weare. Richard S. Almond B., George F., Franklin P., Irving G.

G 8—FRANKLIN PIERCE, (Son of Stephen, G 7) 1850-1927, b Weare, m 1874 Eliza I. Young. Prominent citizen of Newport, widely known and highly respected. occ. machinist Manchester

6 yrs., removed to Newport, grist mill operator, grain and lumber business, member Gen. Court N. H. 1893-1894, Director 1st Nat. Bank, Vice President Newport Savings Bank, ch. **Arthur S., Stephen Franklin, Lena Gertrude** b 1880, m 1910 **Weston P. Lord, Irving Willis, Jesse Richard.**

G 9—**ARTHUR S.** (Son of Franklin P. 8) 1876-1951, b Newport, res Newport, m 1899 **Bessie Jocelyn.** ch **Richard Irving** b 1899, **Sayward Franklin** 1900.

G 9—**STEPHEN FRANKLIN** (Son of Franklin P. 8) 1878-1948. b Newport, m 1929 **Viola J. Brock,** res Newport.

G 9—**IRVING WILLIS** (Son of Franklin P. 8) 1885-1943. b Newport, m 1907 **Edith Amy Glidden.** ch **Charles Irving** b 1914, **Jean Elizabeth** 1916, **Ruth Eleanor** 1919.

G 9—**JESSE RICHARD** (Son of Franklin P. 8) b 1890 Newport, m 1914 **Laura M. Wilmarth,** res Newport. An outstanding business man devoted to public service and the general good, very active in social and fraternal organizations and in community, church and hospital affairs. occ. Manager and Treasurer **Rowell Bros. Inc.,** Vice President **Brampton Woolen Company.** School Board 1927-33, Selectman 1931-45, member General Court of N. H., 6 terms House, 2 terms Senate. ch. **Malcolm Wilmarth** b 1914, **Bertha Margarite** 1917, **Donald Arthur** 1924 (d infancy).

A SECOND ROWELL FAMILY

ENOS ROWELL 1 and Descendants

of the extreme northern part of New Hampshire and adjacent areas of Vermont and the Province of Quebec, Canada.

Note: The data regarding this family was contributed by Mrs. **Viola J. Rowell** of East Hebron, Quebec Province, who is well informed regarding the descendants of **Enos Rowell** and also of the address of other **Rowells** living in the area concerned.

1—**ENOS ROWELL** came to the New England colonies from Ireland via Spain shortly before the Revolutionary War and settled at or near Piermont, N. H. He had a son **Sampson** and a son "X" whose given name is not known.

2—**SAMPSON** (Son of Enos 1) b 1772 Piermont, m **Phoebe Stokes.** Came to Indian Stream, which was later in 1840 incorporated as Pittsburg, N. H., in 1823 from Piermont. occ Farmer, served in the Indian Stream war 1832-36.

ch—**David T.,** b 1808 in N. H.; **Rhoda; Wellman,** b 1813; and a son "Y" whose given name is unknown and who went to Johnsville, Quebec Province.

- 2—"X" (Son of Enos 1) who had two sons, **Mose** and **John**. See 3d generation below.
- 3—"Y" (Son of Sampson 2). He res Johnsville, Quebec. m ———, Coates. Ch—**George**, **Mary** and **Marriam**, twins, b 1827; and **Simeon**.
- 3—**DAVID T.** (Son of Sampson 2) b 1808, m **Elizabeth B. Smith**. res **Pittsburg**, N. H. Ch—**Ellen** b 1833; **Charles** 1836-1907; **George Allen**, b 1838; **David O.**, b 1841; **Sumner Townsend**, b 1846; **Lois**; **Lucious**, b 1850; **Charles**, d unmarried.
- 3—**WELLMAN** (Son of Sampson 2) 1813-1872, m **Hannah Flanders** who d 1880. res **Pittsburg**, N. H., **Canaan**, Vt., **Hereford**, Que. Ch—b **Pittsburg**—**Edwin**, b 1834; d 1864; **Henry**, 1836-1915; **Zebulon F.**, 1838-1906;—b **Canaan**—**Franklin B.**, 1840-1905; **Hiram**, 1842-1867; **Maria**, 1844-1870; **Mary**, 1846-1871;—b **Hereford**, Que.—**Wellman, Jr.**, 1848-1873; **Freeman**, 1850-1855; **George**, 1855-1877. Only **Henry** and **Zebulon** married.
- 3—**MOSE** (Son of "X" 2) m **Marcissie Parker**. Ch—**Persis**, **Martha Ann**, **Ruby**, **Ransom**, **Ira**, **Mary Ann**, **Parker**, 1851-1925.
- 3—**JOHN** (Son of "X" 2) m **Malinda Smith**. res **Pittsburg**, N. H. Ch—b **Canada**, **Albert**, 1831; **Emily**, 1834; **Betsy**, 1832. b N. H.—**Schuyler**, 1839, Civil War soldier; **Little John**, 1843; **Diana**, 1846; **Fanny**, 1848.
- 4—**GEORGE ALLEN** (Son of **David T.** 3) b 1838, res **Pittsburg**. Civil War soldier. Ch—2 daughters.
- 4—**DAVID O.** (Son of **David T.** 3) b 1841, m **Sarah Jacobs**, res **Stratford**, N. H. Ch—**Edgar**.
- 4—**SUMNER TOWNSEND** (Son of **David T.** 3) b 1846, m **Julia Brown**, res **Stewartstown**, N. H. Civil War soldier, Ch—**Jessie**.
- 4—**LUCIOUS** (Son of **David T.** 3) b 1850, m unknown, res **Stratford**, N. H. Ch—**Wellman H.**, a farmer at **Derby Line**, Vt.; **Kenneth**, a Lieut. WW 1; and a daughter.
- 4—**HENRY** (Son of **Wellman** 3) 1836-1915, b **Pittsburg**, d **E. Hereford**, m 1866 **Marietta Parker**, res **Hereford**, Que. Ch.—**Walter L.**, b 1867; **Jennie E.**
- 4—**ZEBULON F.** (Son of **Wellman** 3) 1838-1906, b **Pittsburg**, m 1862 **Margaret A. Owen**; res **Hereford**, Que. Ch—b **Pittsburg**—**Elwin E.**, b 1863; **Edwin C.**, 1864; **Orvin S.** 1866; b **Hereford**, **Ida May**, 1868; **Frank I.**, 1870; **Ida M.** 1873; **Burton Z.**, 1875; **Vera I.**, 1882.
- 5—**WALTER L.** (Son of **Henry** 4) 1867-1948, m 1897 **Esther M. Weston** who d 1939, ch—twins, boy still born and girl, **Doris M.**, b 1897.

- 5—ELWIN E. (Son of Zebulon F. 4) 1863-1921, b Pittsburg, m 1906 Sarah E. Baxter, res Boston, Mass. Ch—Raymond Leslie, b 1908.
- 5—EDWIN C. (Son of Zebulon F. 4) 1864-1927, b Pittsburg, m 1891 Lula B. Chase, res Hereford Hill, Que.; occ farmer. Ch—Harold G., b 1892; Celyon, 1896; Irvin E. 1898-1921, a soldier WW 1; Edna, 1900.
- 5—ORVIN S. (Son of Zebulon F. 4) 1866-1931, b Pittsburg m 1902 Mrs. Eva J. Evans, res Boston, Mass., Hereford, Que. No ch.
- 5—FRANK I. (Son of Zebulon F. 4) 1870-1947, b Hereford, Que. m 1903 Viola J. Bennett, ch—Sylvia E., b 1904; Wilson O. 1907; John B., 1909; Wellman A., 1914, a soldier Canadian Army W W 2.
- 6—HAROLD G. (Son of Edwin C. 5) b 1892 Hereford Hill, Que. m 1930 Flora Kempton. Harold was a soldier W W 1 and served in Germany. Ch—Donald B., b 1931, Hanover, N. H.
- 6—CELYON (Son of Edwin C. 5) 1896-1947, m Kathryn Kinney, res Lancaster, Pa. Soldier W W 1. Ch—Annabelle K. b 1924; James E., 1927; Dorothy E., 1930; Charles E., 1934; Francis G. 1938, a graduate 1956 Milton Hershey Industrial School, res Lancaster.
- 6—JOHN B. (Son of Frank I. 5) b 1909, Canaan, Vt.; m 1939 Marabelle G. Brown, res Canaan, Vt. Ch—Joanne E., b 1940 E. Hereford, Que.; Avery I., b 1942, Sherbrooke, Que.
- 7—DONALD B. (Son of Harold G. 6) b 1931 Hanover, N. H., m 1953 Beverly Camp, res Carmichael, Calif. Ch—Terry Ann, b 1954.
- 7—JAMES E. (Son of Celyon 6) b 1927 Lancaster, Pa., m 1949 Jaqueline Brust, res Lancaster, Pa. Ch—Linda Marie, b 1955.
- 7—CHARLES EDWARD (Son of Celyon 6) b Lancaster, Pa., m 1956 Josephine DeTrilio; Service in Marine Corps 1953-1958, a Sgt. at Philadelphia in 1956.
- 7—AVERY I. (Son of John B. 6) b 1942, Sherbrooke, Que.

APPENDIX

Some History and a Legend

Ezra S. Stearns, writing in 1908, says "Rowell is among the early names of Mass. Bay Colony and among the first found in Chester, N. H. and has been steadily identified with the material, intellectual and moral progress of New Hampshire".

The Mass. Bay Colony Rowells were of English descent and according to a legend descended from a French family named RAOUL of the 11th Century. The French RAOULS were retainers with military obligations who served under William the Conqueror, of Normandy, on the invasion of England and at the battle of Hastings in 1066.

They settled in England where for six centuries they were tenants of land with military obligations down to the time they emigrated to the American Colonies. During this period the feudal barons and landowners were not expert on the spelling of names of their tenants, thus RAOUL became ROWELL.

During the feudal period tenants of land had the right to change their landlord, as they might desire, and always having a military obligation they no doubt participated in various small wars of England and consequently were widely scattered—some as a result settled in Scotland some in Ireland, as retainers to local landowners. This is confirmed since we know that Rowells arrived in Atlantic ports of the American Colonies from England, Scotland and Ireland.

No doubt these early Rowells were familiar with the armament of feudal levies, viz. the shield for building a wall against mounted knights in armor, the cross bow, the battle axe, the spear and javelin. We know that later they became expert with the deadly long bow and with fire arms.

No doubt, having had for centuries to live under feudal lords as mere tenants of land they were land-starved and land-hungry which is believed to be the dominant motive for their undertaking the hardship of a voyage of two or three months across the stormy Atlantic in the primitive ships of those days and courageously pushing into the wilderness where lands were granted them.

The early settlement of the American Colonies was on a commercial basis. Although the settlers built their crude shelters and fairly early built saw mills and grist mills, foundries were not built for some time, accordingly the settlers were forced to import many essential articles from England; as late as the early part of the 18th century we find probated wills stressing the value of iron pots, kettles and plow-points which could not then be manufactured locally.

Today, living with all manner of luxuries, tools and appliances, it is very difficult for us to picture the rugged simplicity of life in the early Colonies. The sturdy and magnificent women of that period had to keep on their hearths a constant fire of live embers, for if the fire was lost then the men had to go through the woods, five miles or so, to the nearest neighbor to secure some live embers and run back, swinging them, to preserve them for building a fire. Many settlers did not have even a flint and steel!

Considering the stamina and fortitude of the Rowells of feudal times and the energy and courage of their descendants who migrated to the American Colonies, and the influence of a zealous and powerful Church of those early days, we Rowells now living may with reverence look back to our venerable ancestors, knowing that we have inherited a blood stream and habits which guide us in honoring all our obligations, civil and military.

* * *

Personal

Dear Reader:

1. I send you this Register of Rowells, which is distributed privately at my own expense, to stimulate your interest; hoping that you will advise me of any errors, omissions, or additions and any data you may have regarding the families, listed in the appendix, whose descent is under study.

2. Nearly everybody has a family record extending back to their male grandfather, so if pertinent, I hope you will forward me data on your own family and that of your father and grandfather.

For your convenience detachable forms are found on the back pages.

Awaiting your news and with cordial regards.

Sincerely,

Melvin Rowell

Address: Box 172

Northwood Narrows, N. H.

15 Dec. 1956

APPENDIX

OTHER FAMILIES WHOSE LINEAGE IS BEING STUDIED

Case No. 1

WILLIAM SILLS ROWELL (Son of ———) b Nov. 5, 1849, Selma, Ala.; d May 30, 1914, Pine Bluff, Ark.; m Mary Alice Morrison; res. settled 1868 at Rowell, Ark., in 1892 moved to Pine Bluff; occ Capt 1st Ala. Inf. late in Civil War, Planter, merchant, cotton gin mill operator, Postmaster Rowell (Cleveland county) estab. Oct. 1884, discon. Dec. 1889.

Ch—1 Alexander Hendrix, 2 Ona m Dacy, 3 William S, 4 Fred S, 5 Alice m Crawford, 6 Lena m Caruthers. 7 Elizabeth.

WILLIAM SILLS, Jr. (Son of William Sills) b———, d 1942, m Margaret Alice ———, res Pine Bluff, occ prominent lawyer Pine Bluff with son Hendrix 1931-1942.

ch (surviving male) 1 Brig. Gen. Fred S. res Roswell N.M.; 2. William S., 3d, Laurel St., Pine Bluff; 3. Hendrix b 1908 Pine Bluff, address 414 National Bldg. Pine Bluff, lawyer practised with father 1931-1942 and since 1942 by himself.

REMARKS: *According to a family legend nine Rowells came over from Scotland on the SPUR. It is probable that they landed, during the Colonial period, at Carolina ports and that they later moved West. Further information of the lineage of this family is desired.*

Case No. 2

WILLIAM ROWELL (Son of Aaron who b abt 1780) b 1805 New Milford, Me., d 1857 Lancaster, N. H., m Belinda Rogers, res Lancaster after 1844; occ carpenter and builder.

ch 1 Lydia M. 2 William D, 3 James M. 4 Levi W, 5 Victoria A, 6 Catharine, 7 Ellen M.

WILLIAM L (Son of William) b 1834 Gorham, N. H., res Lancaster, m 1856 Martha A. LeGro, occ carpenter and builder, settler of estates, collector for law firms, a very patriotic citizen of Revolutionary descent, Six Rowells having served at Bunker Hill and his grandfather served in War of 1812. He served in Civil War and was Sgt. Oct. 1862 to Apr. 1863.

ch 1 Amos Fremont, 2 David Eugene, 3 Carrie m G. E. Lane, 4 William L., Jr. an expert monotypist Boston.

AMOS FREMONT (Son of William L) b 1857 Lancaster, d 1903, res St. Johnsbury, Vt., Lancaster, occ Editor and owner Lancaster Gazette, prominent member of fraternal organizations as was his father.

REMARKS: *Probably this family are descendants of Thomas Rowell and possibly are related to the family following under Case No. 3. It is significant that the names AARON and LYDIA occur in each family and that there was an AARON, b abt 1691, of the 4th generation (Son of Philip 3) of the descendants of Thomas.*

Further information is desired.

Case No. 3

HIRAM LEONARD ROWELL (Son of ———) b abt 1846, had 4 brothers George, Gardiner, Aaron and John and a sister Lydia. d ———, m 1869 Clara F. Bachelder of E. Kingston. res Melrose, Mass., Rochester and E. Kingston, N. H., occ Justice of Peace and Postmaster E. Kingston, Merchant, Auctioneer.

ch—Albert Leonard b 1871, Harriet Frances 1873, m 1933 Wallace Tilton; Irving 1875, Charles Warren 1877, a retired Insurance Agent, res Brookline, Mass.; Edward Stevens 1879; Walter Gifford 1881; Anne Tewksbury 1886, m 1931 Eldou Packard; Marion Lucretia 1890; Frederick Bachelder 1895.

ALBERT LEONARD (Son of Hiram L.) 1871-1939 b Rochester. m 1912 Malvina McCarthy of Boston, res Boston, Pittsburg, Pa., Brookline, Mass., occ Hotel Manager.

ch—Nathaniel Bachelder b 1921.

NATHANIEL BACHELDER (Son of Albert L.) b 1921, m 1948 Arline L. French of Dorchester, Mass.; res Boston, S. Weymouth, E. Kingston. occ Insurance.

ch—Amy Lynne 1949, Scott Bachelder 1950; Jonathan French 1953; Cynthia Gale 1954; Leonard Charles 1956.

Case No. 4

FRANK ROWELL (Son of Isaac) 1846-1933, b Brentwood, N. H., m Mary Garland of Exeter, N. H., res Brentwood, occ farmer. ch—1 Carrie 1875, m C. S. Smith; 2 Howard 1877; 3 Grace 1881, m 1903 C. D. Carlisle now of Northwood, N. H., 4 Sidney F 1885.

HOWARD (Son of Frank) 1877-1953, b Brentwood, m Mabel Pike of Exeter, res Haverhill, Mass., Epping, N. H., where he operated an ice plant, and abt 1943 moved to Bristol, N. H.

ch—1 Unknown, 2 Madeline.

SIDNEY FOREST (Son of Frank) b 1885 Brentwood, m Bertha Stevens of Lowell, Mass., res Pelham, N. H., occ operator steam engines and saw mill owner.

ch—1 Lena, 2 Arthur, served in U. S. Navy; 3 Doris, 4 Priscilla, 5 Robert.

REMARKS: *Parentage and lineage of Isaac, b abt 1820, desired.*

Case No. 5

ASHLEY ROWELL, b abt 1820 res. Lockport, N. Y. in 1870 when his son Charles Walter entered West Point School.

CHARLES WALTER (Son of Ashley) b 1850, d 1898 killed in action Santiago Cuba, Capt. 2d U. S. Inf. Graduate West Point 1874.

ch—Frank W. and Charles Walter b (1887) Idaho, an X Cadet West Point Class of 1910.

FRANK W. (Son of Charles Walter) b 1880 Idaho, d Jan. 1947, buried Golden Gate National Cemetery, San Bruno, Calif., following the death of his father President McKinley, in Sept. 1898, appointed him 2d Lieut U. S. Inf. at 18 yrs. of age and he was a Maj. Gen. in 1938. He m Gertrude ———, whose last known address was Palo Alto, Calif. The last known address of his mother (1906) was "Mrs. C. W. Rowell, University of Virginia, Albermarle County Va."

REMARKS: *We have diligently tried to secure further data about this family but without results to date.*

Case No. 6

CHESTER HARVEY ROWELL (Son of Jonathan Harvey and Maria Sanford Rowell) b Nov. 1, 1867 Bloomington, Ills. d Apr. 12, 1948 Oakland, Calif., buried Mt. View Cemetery, Oakland; m Aug. 1, 1897 Myrtle Marie Lingle of Webb City, Mo. Distinguished Editor of Oakland Tribune.

REMARKS: *The middle names above viz HARVEY and SANFORD are of prominent New England families and indicate a New England origin of Jonathan and his wife. Further information desired.*